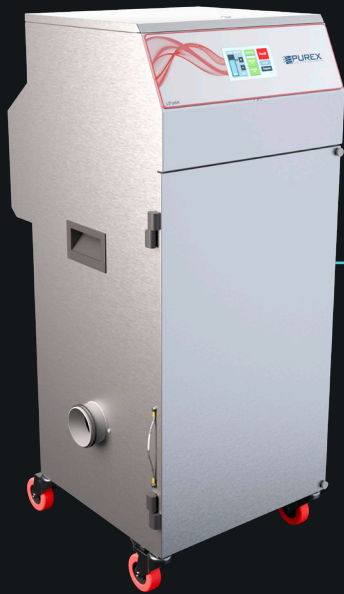


IFUME 400i PVC

Moderate, **PVC specialized fume** extraction



Description & features

- Full colour touch screen display
- Highest grade HEPA and carbon technology
- Automatic electronic flow control - maintains a constant extraction rate even as the filter blocks
- Gas and particle sensors to warn the operator
- Operate worldwide with no loss of performance
- Specialized coating to prevent corrosion

Filters



Main Filter Code

113498C

Description

HEPA/Chemical



Pre-Filter Code

111097

Description

F8/F9 Labyrinth



Pre-Filter Code

200037

Description

Chemical Absorbant Pad

Specification

Voltage		100v - 230v
Vacuum Part Number		1704122
Wattage		1.1kW
Frequency		50Hz / 60Hz
Cabinet Height		1195mm
Cabinet Width		465mm
Cabinet Depth		528mm
Cabinet Weight		70kg
Airflow		400m3/h
Sound Level		<60dBa

Machine supplied with

• 1 x Main Filter • 1 x Pre-filter • 1 x Absorbant Pad • 1 x Connection Kit • 1 x Power Cable • 1 x Manual

Find out more: W purex.co.uk | [T +44 \(0\)1405 746030](tel:+44(0)1405746030) | [E purex@purex.co.uk](mailto:purex@purex.co.uk)

Registered Office: Purex International Limited, QWP House, Island Drive, Capitol Park, Thorne, Doncaster DN8 5UE
Registered No. 5136616 England | VAT No. GB842 5025 49 | WEEE Producer Registration Number: WEE/CE0067TX
*Goods are subject to change | *Illustrations are 3D created visual representations

IFUME 400i PVC

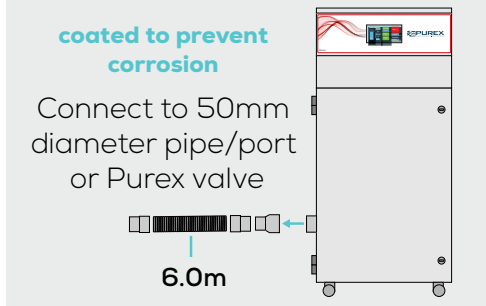
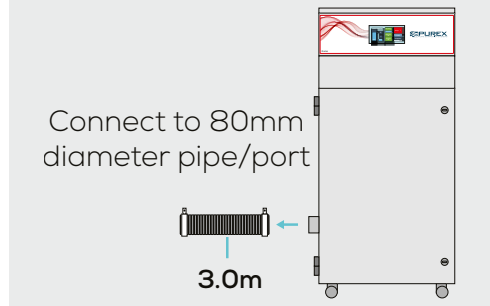
Moderate, **PVC specialized fume** extraction

Options

Pre-filter

Code	Description
111057	F6 Labyrinth

Connection kits

100043C			120299		
Hose End Diameter	Hose Length	Purex Inlet Diameter	Hose End Diameter	Hose Length	Purex Inlet Diameter
50mm	6m	80mm	80mm	3m	80mm
<p>coated to prevent corrosion</p> <p>Connect to 50mm diameter pipe/port or Purex valve</p>  <p>6.0m</p>			<p>Connect to 80mm diameter pipe/port</p>  <p>3.0m</p>		

Interfacing

Interfacing can remotely start the Purex machine when the connected machine starts.

Interfacing can also warn the connected machine when the Purex machine is in alarm.

Your Machine

10011010



10011010

Extractor

Take a look through our [Interfacing Guide](#) to see our extensive range of options