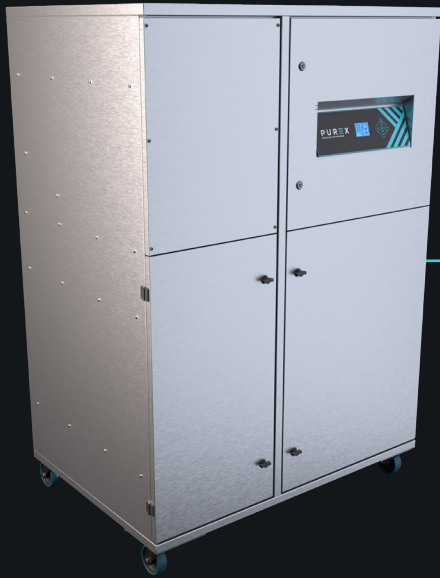


# 5000i HD

Large, heavy duty fume extraction unit

**PUREX**  
CLEAN AIR FOR EVERYONE



## Description & features

- Clear & informative graphic display
- Highest grade HEPA and carbon technology
- Automatic electronic flow control - maintains a constant extraction rate even as the filter blocks
- Gas and particle sensors to warn the operator
- Larger filter capacity for high dust applications

## Filters



Main Filter Code

110633

Description

HEPA



Main Filter Code

110627

Description

Chemical



Pre-Filter Code

200600

Description

F8 Pleat Pack



Pre-Filter Code

200044

Description

G3 Pad

## Specifications

	3 phase supply	
	220v	400v
<b>Voltage</b>		
<b>Part Number</b>	OLX5575D	OLX5570D
<b>Wattage</b>	7.5kW	
<b>Frequency</b>	50Hz / 60Hz	
<b>Cabinet Height</b>	1804mm	
<b>Cabinet Width</b>	1250mm	
<b>Cabinet Depth</b>	892mm	
<b>Cabinet Weight</b>	400kg	
<b>Airflow</b>	5000m <sup>3</sup> /h	
<b>Sound Level</b>	<60dBa	

## Machine supplied with

• 2 x Main Filter • 3 x Pre-filter • 1 x 4.5m x Fixed Power Cable ( No Plug) • 1 x Manual

Find out more: [W purex.co.uk](http://W purex.co.uk) | [T +44 \(0\)1405 746030](tel:+44(0)1405746030) | [E purex@purex.co.uk](mailto:purex@purex.co.uk)

Registered Office: Purex International Limited, QWP House, Island Drive, Capitol Park, Thorne, Doncaster DN8 5UE  
Registered No. 5136616 England | VAT No. GB842 5025 49 | WEEE Producer Registration Number: WEE/CE0067TX  
\*Goods are subject to change | \*Illustrations are 3D created visual representations

# 5000i HD

Large, heavy duty fume extraction unit

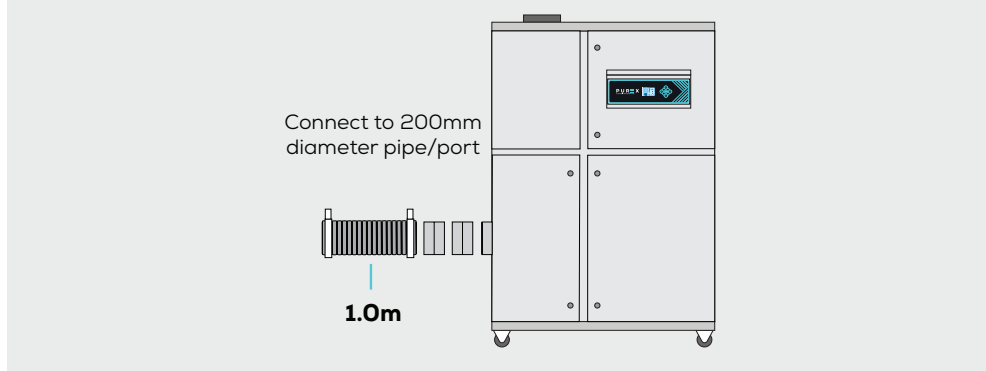
# Options

## Main filter

Code	Description
110624	Chemical

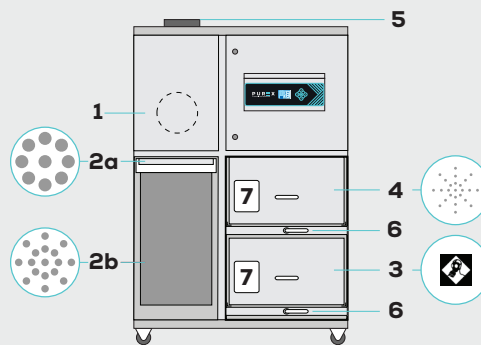
## Connection kits

120296		
Hose End Diameter	Hose Length	Purex Inlet Diameter
200mm	1m	200mm



## Technical

### Rear Inlet



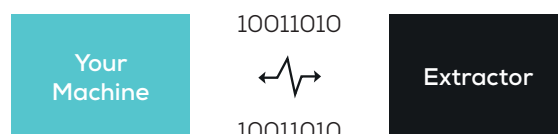
### LEGEND:

- 1. Air inlet - 200mm safe seal
- 2a. Pre-filter pad
- 2b. Pre-filter pleated bag
- 2c. Pre-filter labyrinth bag
- 3. Main filter (carbon location)
- 4. Main filter (HEPA location)
- 5. Clean air returned to the workplace
- 6. Filter locking handles
- 7. Filter identification labels

## Interfacing

Interfacing can remotely start the Purex machine when the connected machine starts.

Interfacing can also warn the connected machine when the Purex machine is in alarm.



Take a look through our [Interfacing Guide](#) to see our extensive range of options