

400i

Moderate, multi-use fume extraction unit

PUREX

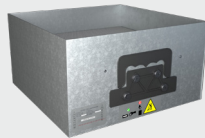
CLEAN AIR FOR EVERYONE



Description & features

- Clear & informative graphic display
- Highest grade HEPA and carbon technology
- Automatic electronic flow control - maintains a constant extraction rate even as the filter blocks
- Gas and particle sensors to warn the operator
- Adjustable airflow

Filters



Main Filter Code

113505C

Description

HEPA/Chemical



Pre-Filter Code

111057

Description

F6 Labyrinth

Specification

Voltage	120v	230v
Volume Part Number	OLX4013D	OLX4010D
Vacuum Part Number	080411ID	080410ID
Wattage	1.2kW	
Frequency	50Hz / 60Hz	
Cabinet Height	1070mm	
Cabinet Width	465mm	
Cabinet Depth	528mm	
Cabinet Weight	50kg	
Airflow	400m ³ /h	
Sound Level	<60dBa	

Machine supplied with

- 1 x Main Filter • 1 x Pre-filter • 1 x Connection Kit • 1 x Power Cable • 1 x Manual

Find out more: W purex.co.uk | [T +44 \(0\)1405 746030](tel:+44(0)1405746030) | [E purex@purex.co.uk](mailto:purex@purex.co.uk)

Registered Office: Purex International LTD, Unit A, Saltgrounds Road, Brough, HU15 1EG, UK

Registered No. 5136616 England | VAT No. GB842 5025 49 | WEEE Producer Registration Number: WEE/CE0067TX

*Goods are subject to change | *Illustrations are 3D created visual representations

400i

Moderate, multi-use fume extraction unit

Options

Main filter

Pre-filter

Connection kits

Code	Description	Code	Description
113508	Chemical	113504	HEPA / Chemicals
113505P	Chemical	113512	HEPA / Chemical (Cleanroom)
113809	HEPA	113669	HEPA / Chemical (Cleanroom)
113662	CSA Chemical	113505H	HEPA (Hydrophobic)
113579	HEPA / Twin Chemical	113513	Solvent Lock
113668	HEPA / Twin Chemical	113531	Pleated Bag
111097	F8 / F9 Labyrinth		

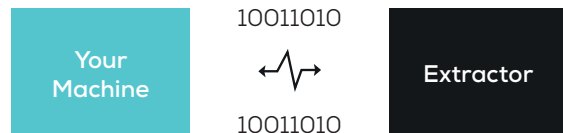
If you do not see a connection kit that fits your machine or pipework, please contact Purex or your representative

100032			100043			100171		
Hose End Diameter	Hose Length	Purex Inlet Diameter	Hose End Diameter	Hose Length	Purex Inlet Diameter	Hose End Diameter	Hose Length	Purex Inlet Diameter
50mm	3m	80mm	50mm	6m	80mm	125mm	3m	80mm
Connect to 50mm diameter pipe/port or Purex valve 			Connect to 50mm diameter pipe/port or Purex valve 			Connect to 125mm diameter pipe/port 		
120288			120297			120299		
Hose End Diameter	Hose Length	Purex Inlet Diameter	Hose End Diameter	Hose Length	Purex Inlet Diameter	Hose End Diameter	Hose Length	Purex Inlet Diameter
100mm	2.3m	80mm	100mm	2m	80mm	80mm	3m	80mm
Connect to 100mm diameter pipe/port 			Connect to 100mm diameter pipe/port or Purex valve 			Connect to 80mm diameter pipe/port 		

Interfacing

Interfacing can remotely start the Purex machine when the connected machine starts.

Interfacing can also warn the connected machine when the Purex machine is in alarm.



Take a look through our [Interfacing Guide](#) to see our extensive range of options