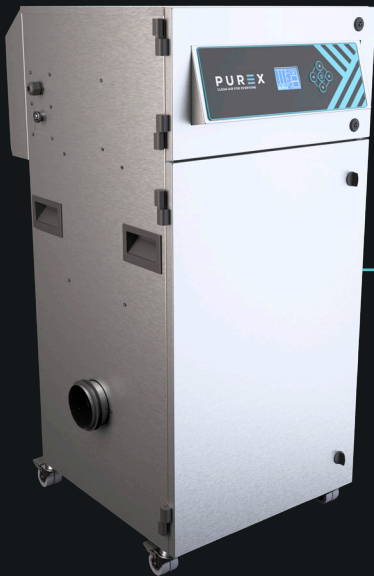


# 750i 2-Tier

Moderate, multi-use fume extraction unit

**PUREX**  
CLEAN AIR FOR EVERYONE



## Description & features

- Clear & informative graphic display
- Highest grade HEPA and carbon technology
- Automatic electronic flow control - maintains a constant extraction rate even as the filter blocks
- Gas and particle sensors to warn the operator
- Adjustable airflow
- High performance machine, ready to plug in

## Filters



Main Filter Code

113652

Description

HEPA/Chemical



Pre-Filter Code

111098

Description

F6 Labyrinth

## Specification

Voltage	100v - 230v
Part Number	075000D
Wattage	2.4kW
Frequency	50Hz / 60Hz
Cabinet Height	1155mm
Cabinet Width	571mm
Cabinet Depth	675mm
Cabinet Weight	83kg
Airflow	750m <sup>3</sup> /h
Sound Level	<60dBa

## Machine supplied with

- 1 x Main Filter • 1 x Pre-filter • 1 x 4.5m Fixed Power Cable (plug fitted) • 1 x Manual
- Plug connections must be specified

Find out more: [W purex.co.uk](http://W purex.co.uk) | [T +44 \(0\)1405 746030](tel:+44(0)1405746030) | [E purex@purex.co.uk](mailto:purex@purex.co.uk)

Registered Office: Purex International LTD, Unit A, Saltgrounds Road, Brough, HU15 1EG, UK

Registered No. 5136616 England | VAT No. GB842 5025 49 | WEEE Producer Registration Number: WEE/CE0067TX

\*Goods are subject to change | \*Illustrations are 3D created visual representations

# 750i 2-Tier

Moderate, multi-use fume extraction unit

# Options

## Main Filter

Code	Description
113651	Chemical
113658	HEPA / Chemical (Cleanroom)
113660	HEPA / Twin Chemical
113650	HEPA
113667	Solvent Lock

## Pre-filter

111004	F8 / F9 Labyrinth
--------	-------------------

## Connection kits

If you do not see a connection kit that fits your machine or pipework, please contact Purex or your representative

### 120288

Hose End Diameter	Hose Length	Purex Inlet Diameter
80mm	2.3m	100mm

Connect to 80mm diameter pipe/port

### 100105

Hose End Diameter	Hose Length	Purex Inlet Diameter
100mm	2m	100mm

Connect to 100mm diameter pipe/port

### 100107

Hose End Diameter	Hose Length	Purex Inlet Diameter
100mm	3m	100mm

Connect to 100mm diameter pipe/port

### 120291

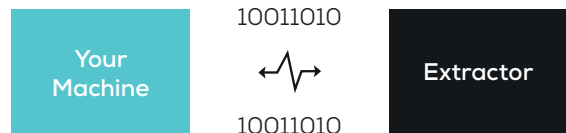
Hose End Diameter	Hose Length	Purex Inlet Diameter
100mm	3m	100mm

Connect to 100mm diameter pipe/port

## Interfacing

Interfacing can remotely start the Purex machine when the connected machine starts.

Interfacing can also warn the connected machine when the Purex machine is in alarm.



Take a look through our [Interfacing Guide](#) to see our extensive range of options