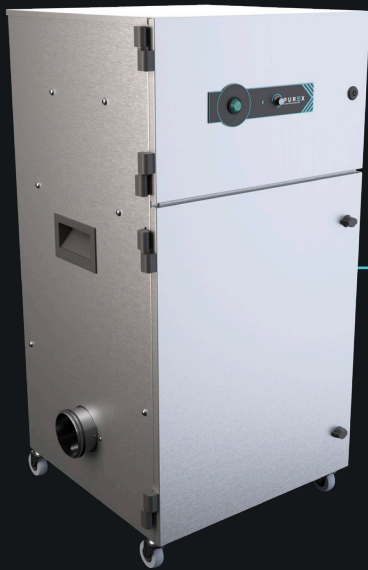


ALPHA 400

Moderate, multi-use fume extraction unit

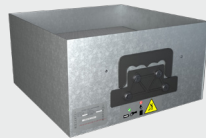
PUREX
CLEAN AIR FOR EVERYONE



Description & features

- VariColour filter blocked warning system
- Highest grade HEPA and carbon technology
- Automatic electronic flow control - maintains a constant extraction rate even as the filter blocks
- Quiet in operation
- Simple to install and easy to relocate

Filters

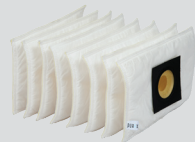


Main Filter Code

113505C

Description

HEPA/Chemical



Pre-Filter Code

111085

Description

F6 Labyrinth

Specification

Voltage	120v	230v
Part Number	OAL4103	OAL4102
Wattage	1.1kW	
Frequency	50Hz / 60Hz	
Cabinet Height	885mm	
Cabinet Width	465mm	
Cabinet Depth	430mm	
Cabinet Weight	55kg	
Airflow	400m ³ /h	
Sound Level	<60dBa	

Machine supplied with

• 1 x Main Filter • 1 x Pre-filter • 1 x Connection Kit • 1 x Power Cable • 1 x Manual

Find out more: W purex.co.uk | [T +44 \(0\)1405 746030](tel:+44(0)1405746030) | [E purex@purex.co.uk](mailto:purex@purex.co.uk)

Registered Office: Purex International LTD, Unit A, Saltgrounds Road, Brough, HU15 1EG, UK

Registered No. 5136616 England | VAT No. GB842 5025 49 | WEEE Producer Registration Number: WEE/CE0067TX

*Goods are subject to change | *Illustrations are 3D created visual representations

ALPHA 400

Moderate, multi-use fume extraction unit

Options

Main filter

Code	Description	Code	Description
113508	Chemical	113668	HEPA / Twin Chemical
113505P	Chemical	113512	HEPA / Chemical (Cleanroom)
113809	Chemical Special	113669	HEPA / Chemical (Cleanroom)
113662	CSA Chemical	113505H	HEPA (Hydrophobic)
113579	HEPA / Twin Chemical	113513	Solvent Lock
	113531		Pleated Bag

Pre-filter

111095	F8 / F9 Labyrinth
--------	-------------------

Connection kits

If you do not see a connection kit that fits your machine or pipework, please contact Purex or your representative

100032

Hose End Diameter	Hose Length	Purex Inlet Diameter
50mm	3m	80mm

Connect to 50mm diameter pipe/port or Purex valve

3.0m

100043

Hose End Diameter	Hose Length	Purex Inlet Diameter
50mm	6m	80mm

Connect to 50mm diameter pipe/port or Purex valve

6.0m

120293

Hose End Diameter	Hose Length	Purex Inlet Diameter
80mm	1.3m	80mm

Connect to 80mm diameter pipe/port

1.3m

120288

Hose End Diameter	Hose Length	Purex Inlet Diameter
100mm	2.3m	80mm

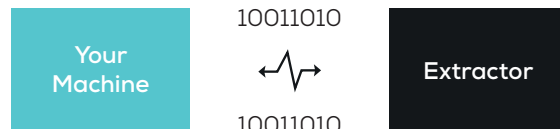
Connect to 100mm diameter pipe/port

0.3m 2.0m

Interfacing

Interfacing can remotely start the Purex machine when the connected machine starts.

Interfacing can also warn the connected machine when the Purex machine is in alarm.



Take a look through our [Interfacing Guide](#) to see our extensive range of options