

# 1750i PVC

Large, PVC specialized extraction unit

**PUREX**  
CLEAN AIR FOR EVERYONE



## Description & features

- Clear & informative graphic display
- Highest grade HEPA and carbon technology
- Automatic electronic flow control - maintains a constant extraction rate even as the filter blocks
- Gas and particle sensors to warn the operator
- Adjustable airflow
- Specialized coating to prevent corrosion from PVC fumes

## Filters



Main Filter Code

110616-PVC

Description

HEPA/Chemical



Pre-Filter Code

110617

Description

Granular Pad PVC



Pre-Filter Code

111037

Description

F6 Labyrinth



Pre-Filter Code

200056

Description

Chemical  
Absorbant Pad

## Specification

	3 phase supply
<b>Voltage</b>	400v
<b>Part Number</b>	OPV2010D
<b>Wattage</b>	3kW
<b>Frequency</b>	50Hz / 60Hz
<b>Cabinet Height</b>	1400mm
<b>Cabinet Width</b>	725mm
<b>Cabinet Depth</b>	726mm
<b>Cabinet Weight</b>	170kg
<b>Airflow</b>	1750m <sup>3</sup> /h
<b>Sound Level</b>	<60dBa

## Machine supplied with

- 1 x Main Filter • 3 x Pre-filter • 1 x 4.5m Fixed Power Cable (no plug) • 1 x Manual

Find out more: [W purex.co.uk](http://W purex.co.uk) | [T +44 \(0\)1405 746030](tel:+44(0)1405746030) | [E purex@purex.co.uk](mailto:purex@purex.co.uk)

Registered Office: Purex International Limited, QWP House, Island Drive, Capitol Park, Thorne, Doncaster DN8 5UE  
Registered No. 5136616 England | VAT No. GB842 5025 49 | WEEE Producer Registration Number: WEE/CE0067TX  
\*Goods are subject to change | \*Illustrations are 3D created visual representations

# 1750i PVC

Large, PVC specialized extraction unit

# Options

Pre-filter

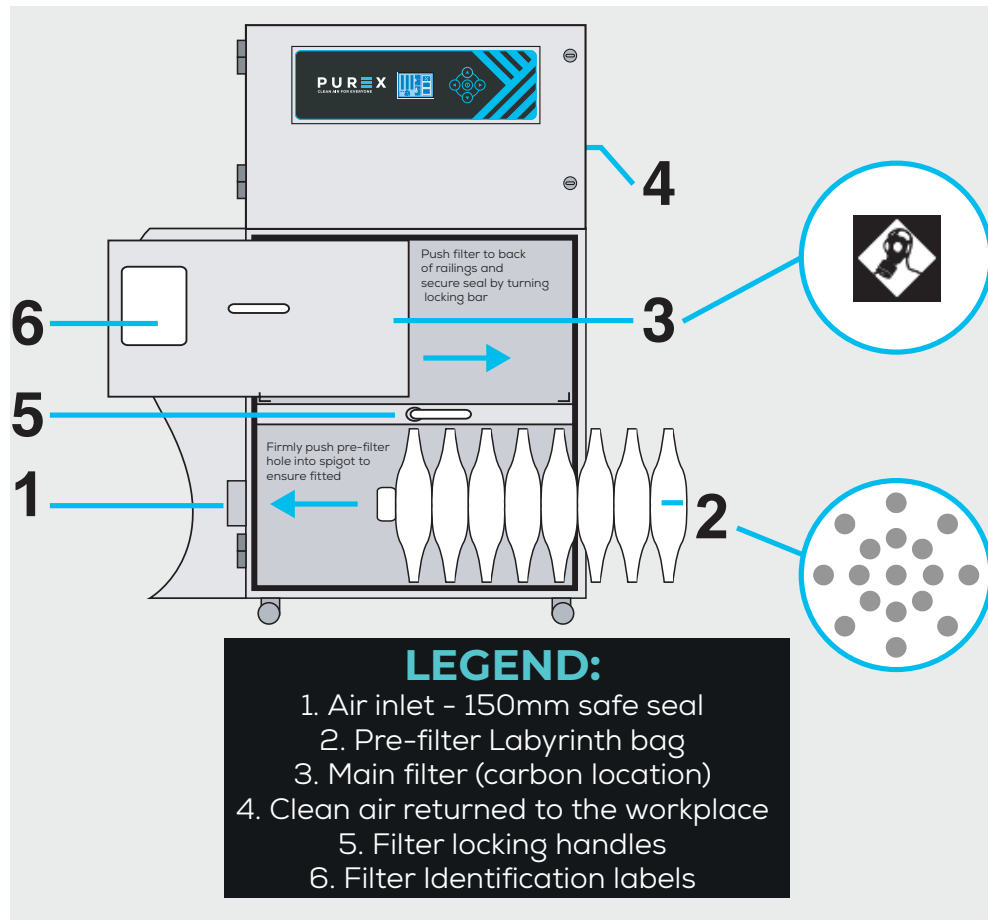
Connection Kit

Technical

Interfacing

Code	Description
111099	F8 / F9 Labyrinth

Please contact Purex or your representative for PVC connection kits



**LEGEND:**

1. Air inlet - 150mm safe seal
2. Pre-filter Labyrinth bag
3. Main filter (carbon location)
4. Clean air returned to the workplace
5. Filter locking handles
6. Filter Identification labels

Interfacing can remotely start the Purex machine when the connected machine starts.

Interfacing can also warn the connected machine when the Purex machine is in alarm.

Your Machine

10011010  
↔  
10011010

Extractor

Take a look through our [Interfacing Guide](#) to see our extensive range of options