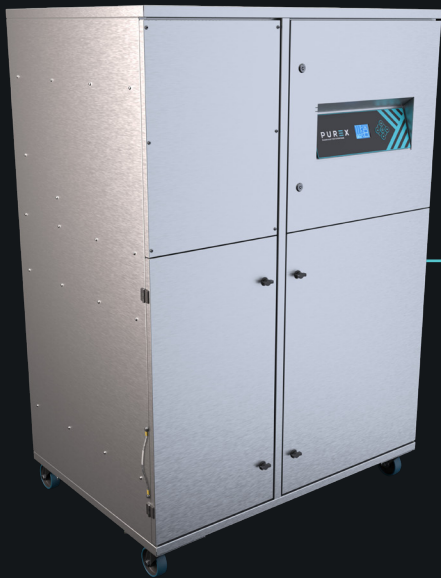


5000i PVC

Large, PVC specialized extraction unit

PUREX
CLEAN AIR FOR EVERYONE



Description & features

- Clear & informative graphic display
- Highest grade HEPA and carbon technology
- Automatic electronic flow control - maintains a constant extraction rate even as the filter blocks
- Gas and particle sensors to warn the operator
- Larger filter capacity for high dust applications
- Specialized coating to prevent corrosion from PVC fumes

Filters



Main Filter Code

110633

Description

HEPA

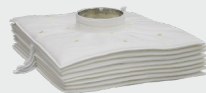


Main Filter Code

110627

Description

Chemical



111006

Description

F8 Pleat Pack



Pre-Filter Code

200044

Description

G3 Pad

Specifications

Voltage		3 phase supply
Side Entry	Volume Part Number	400v OPV5550D
Side Entry	Vacuum Part Number	OPV5551D
Wattage		7.5kW
Frequency		50Hz / 60Hz
Cabinet Height		1804mm
Cabinet Width		1250mm
Cabinet Depth		892mm
Cabinet Weight		400kg
Sound Level		<60dBa

Machine supplied with

• 2 x Main Filter • 2 x Pre-filter • 1 x 4.5m Fixed Power Cable (No Plug) • 1 x Manual

Find out more: W purex.co.uk | [T +44 \(0\)1405 746030](tel:+44(0)1405746030) | [E purex@purex.co.uk](mailto:purex@purex.co.uk)

Registered Office: Purex International LTD, Unit A, Saltgrounds Road, Brough, HU15 1EG, UK

Registered No. 5136616 England | VAT No. GB842 5025 49 | WEEE Producer Registration Number: WEE/CE0067TX

*Goods are subject to change | *Illustrations are 3D created visual representations

5000i PVC

Large, PVC specialized extraction unit

Options

Main filter

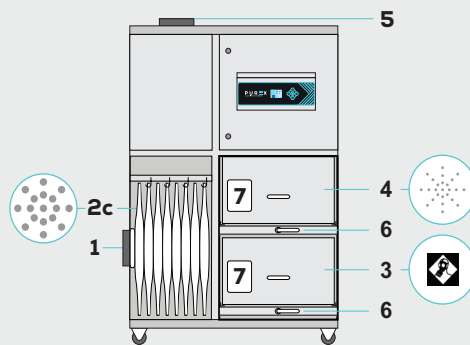
Code	Description
110624	Chemical
110629	Solvent Lock

Connection Kit

If you do not see a connection kit that fits your machine or pipework, please contact Purex or your representative

Technical

Side Inlet



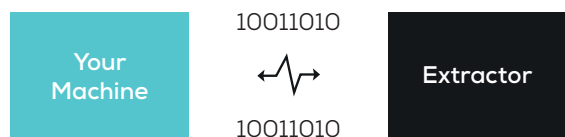
LEGEND:

- 1. Air inlet - 200mm safe seal
- 2a. Pre-filter pad
- 2b. Pre-filter pleated bag
- 2c. Pre-filter labyrinth bag
- 3. Main filter (carbon location)
- 4. Main filter (HEPA location)
- 5. Clean air returned to the workplace
- 6. Filter locking handles
- 7. Filter identification labels

Interfacing

Interfacing can remotely start the Purex machine when the connected machine starts.

Interfacing can also warn the connected machine when the Purex machine is in alarm.



Take a look through our [Interfacing Guide](#) to see our extensive range of options